

CERTIFICATE OF LOCATION OF GOVERNMENT CORNER

East Quarter _____ Corner of Section 34, Township 107, Range 41, 5th P.M.

STATE OF MINNESOTA, County of Murray

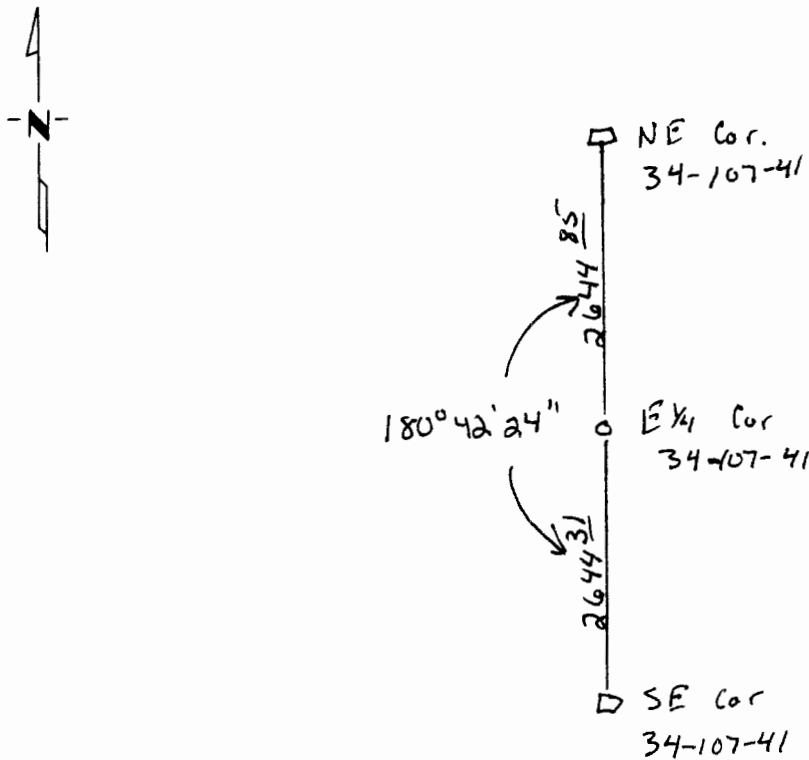
At the corner location shown on the sketch:

On _____ found a _____
DATE

left monument as found, lowered monument, removed monument (explain)

On June 15, 1995 placed a 1" iron pipe w/seal #11943 (SEE BACK)
DATE

SKETCH OF REFERENCE TIES



Statement of evidence relative to this corner location is on back of page.

I hereby certify that this document and the data contained herein was prepared by me or under my direct supervision.

Paul C. Massey July 29, 1995
SIGNATURE DATE

Registration No. 1943
 Land Surveyor, Professional Engineer
 County Surveyor, County Engineer

OFFICE OF THE COUNTY RECORDER
County of _____

I hereby certify that this document was filed in the Co. Recorders office at _____ .M. on the _____ day of _____ A.D., 19 ____

County Recorder _____
By _____, Deputy
DOCUMENT NO. _____

Statement of Evidence:

On June 15, 1995, we made a reasonable search for the corner at the intersection of the fence lines to the west, north, and south. We probed and dug by hand and found nothing (nothing was ever recorded as being set). We set a 1" iron pipe w/seal #11943 in line with fence to the west and the ones to the north and south. Nothing good to tie to.